

Express 5e



Patchpanel 1U Express 5e XE 100.250
FTP/ STP 24 ports patchpanel



FIBRAIN DATA cabling Express series is fully complied to requirements of category 5e (class D) according to the norms: ANSI/TIA/EIA 568-B.2-1 (cat.5e), ISO/IEC 11801 2002, EN 50173:2002, EN 50173-1:2004, IEC 61156-5 edition 2002, IEC 60603-7-5.

Moreover all channel's components are complied to Directive ROHS 2002/95/WE

Components Express series are characterized by high quality of transmission and mechanical parameters and very often exceeding requirements of obeying norms. Such connections support majority of contemporary applications including Ethernet 1000 BASE - T.

FIBRAIN DATA shielded patchpanels Express series are complied to requirements of category 5e (class D). Such connections support majority of contemporary applications. They are equipped with special 9 pin angle connectors IDC-LSA providing ease and fast installation. Such kind of connector provides high transmission parameters and resistance to interference.

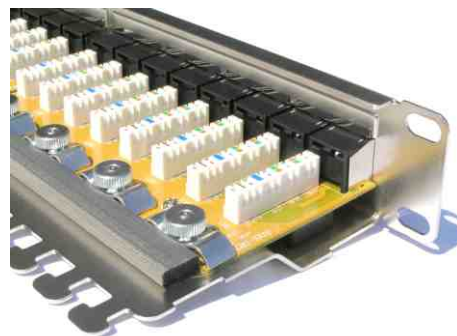
Patchpanels are designed with L shaped shelf facilitate introduction in easy way . Simple access to IDC connectors provides easy maintenance and change of connections. Furthermore, each port and patchpanel has their own numbering. Each set contains descriptive labels and cable bands. Standard height 19".

Characteristics:

- High: 1U, 19"
- Depth: 110 mm
- 8 pins IDC connectors
- Made of powder printed sheet, black colour RAL 9005.
- Description field with replaceable, pre-printed descriptive labels
- Clear port and panels numbering

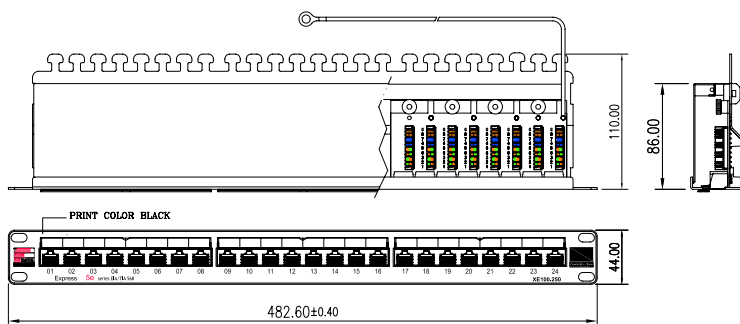
Electrical parameters:

- Max current value: 1,5 A
- Insulation resistance: 500 MOhms min
- Pin resistance: 20 MOhms max
- DC resistance: 0,1 Ohms max



Mechanical parameters:

- Frame: steel plate 1,5 mm
- Jack: unshielded RJ45 cat.6
- Housing: thermoplastic material UL 94V-0, black colour
- Contacts material: bronze phosphoric
- Contacts: OD: 0,48 mm, covered with 50 µm of gold and 100 µm of nickel
- Contacts durability: >750 connection cycles according to norm: EN 60603-7
- IDC connectors: slotted angled connectors IDC LSA
- Wire diameter: 0,4- 0,65 mm (AWG 26-22)
- IDC durability: >200 connection cycles
- Coupler material: bronze phosphoric
- Coupler covering: 1,27 µm of silver and 2,5 µm of nickel
- Braiding identification: T568A and T568B



XE 100.250

Example: XE 100.250 patchpanel FIBRAIN DATA Express series 5e STP 24 ports